

IMT Mo

CLASSIFICATIONS:

EN ISO 14341-A: G2Mo
 AWS A 5.18: ER80S-G
 Werkstoff Nr – 1.5424

DESCRIPTION:

GMAW solid wire copper coated, with 0,5% Mo, for semi-automatic welding under shielding gas of C1(CO₂) or mixtures M21 (Ar + CO₂). The welds are characterized by high strength, ductility and resistance to aging. The working temperature of welded joints is up to 500°C. IMT Mo is to be used for welding of construction steels, boiler steels, shipbuilding steels, creep resistant steels of 0,5% type and low-alloyed general purpose steels of increased strength.

CHEMICAL COMPOSITION [%]:

C	Si	Mn	Mo	Cu
0,10	0,59	1,13	0,50	coating

MECHANICAL PROPERTIES:

SHIELDING GAS	Re [MPa]	Rm [MPa]	A5 [%]	KV [J]	KV [J]
C1(CO ₂); M21 (Ar + CO ₂)	> 460	530 ÷ 680	> 20	> 47 (-20°C) M21	> 47 (-20°C) C1

APPROVALS:

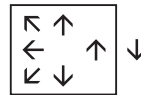
TÜV	LR	ABS	DNV	BV	GL	DB	UDT
+						+	+

Approvals: + obtained, x on request

CURRENT:

= +

WELDING POSITIONS:



DIAMETER:

Ø mm*			
0,8	1,0	1,2	1,6

*Other diameters available after agreement

Multimet Sp. z o.o. is not responsible for obvious mistakes, linguistic and printing mistakes that may appear in the catalogue.